

Get Close!

BIG CROC FEED

10.30am and 1.00pm Personalised guided tour with a Hartley's Crocodile Handler.
 Duration of 45 minutes for a max. of 4 participants.

- Pole feed a large Saltwater (Estuarine) Crocodile
- Learn interesting facts on both Freshwater and Estuarine Crocodiles
- Meet and hold a juvenile Estuarine Crocodile
- Receive a souvenir photo holding a juvenile croc
- Take home a certificate signed by your Crocodile Handler
- Free bottle of chilled water



9.30am and 1.30pm An exciting, interactive guided tour featuring 5 iconic animals.
 Duration of 60 minutes for a max. of 6 participants.

- Cuddle a koala and receive a souvenir photo
- Feed fruit to a cassowary
- Hold a python or lizard
- Pat a wombat
- Feed friendly birds and wallabies
- Free bottle of chilled water

CONDITIONS FOR BIG CROC FEED AND ZOOTASTIC 5

- Must be booked by 4.00pm the day prior. Subject to availability.
- Start times may change. Time advised on booking.
- Min age of 16 years for Big Croc Feed and 10 years for Zootastic 5
- Max of 4 participants for Big Croc Feed and 6 for Zootastic 5
- Cost includes entry, personalised tour, boat ride and public shows.
- \$130 per person self drive

KOALA PHOTOS

KOALA PATTING PHOTOS
 Get close and pat a friendly koala for a souvenir digital photograph. **\$16.00**
 Couple and family photos available. (extra cost)

KOALA HOLDING PHOTOS
 Hold a friendly koala for a souvenir digital photo. **\$22.00**
 Only one person per photo. Must be at least 120cm in height. Limited availability of Koala Holding photos. Please check with Admissions on arrival.

PYTHON & CROC HOLDING PHOTOS \$20.00

Hold a friendly python or a small saltwater crocodile.
 Photo session times: 10.00 am – 4.30 pm, except during Koala Photo Sessions.

FRESHIE FEED \$10.00

Pole feed a Freshwater Croc! Fun for the whole family. Available from October to April, after the 11.00am Crocodile Feeding. Subject to availability. Limited numbers. Pay at Hartley's admissions on the day.

With transfers

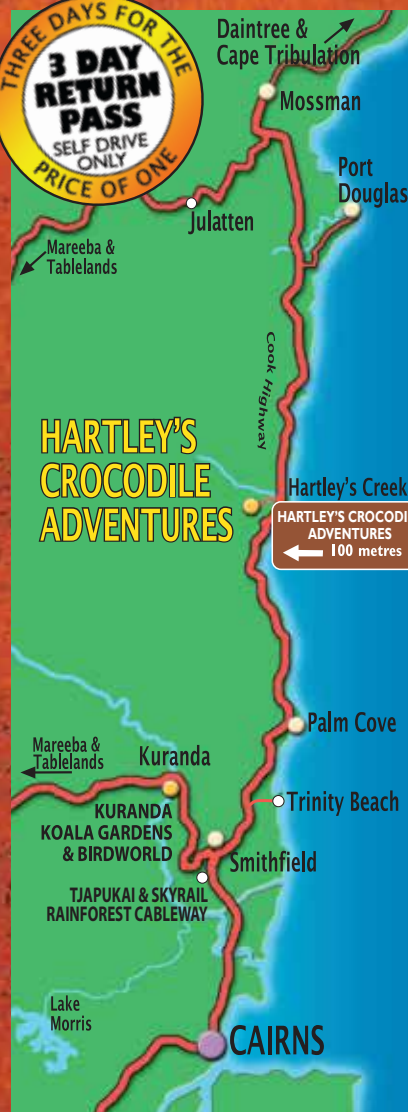
- From Cairns and Northern Beaches: \$165.00
- From Palm Cove: \$152.00
- From Port Douglas \$160.00

Conditions apply. Hartley's Crocodile Adventures cannot guarantee all animals and activities listed will be available on the day



LOCATION

Drive your own vehicle or hire a car
 40km north of Cairns, 15km north of Palm Cove & 25km south of Port Douglas on the scenic Captain Cook Highway.



TRANSFERS

From Cairns & Cairns Beaches
 Down Under Tours (pm only) (07) 4047 9066
 Beaches Meet & Greet (07) 4059 2713
 Relax Tours (pm only) (07) 4038 3454
 BTS Tours & Transfers (07) 4099 5665
 GTS (Global Travel Service) (07) 4041 3122

From Port Douglas
 BTS Tours & Transfers (07) 4099 5665
 Sun Palm Transport (07) 4099 1191

Private Transfers
 International Coaches (07) 4032 5877
 Sun Palm Transport (07) 4099 1191
 Exemplar (07) 4213 3333

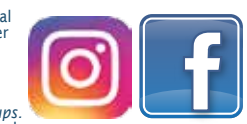
Morning & afternoon departures include all activities from time of arrival

WILDLIFE

HARTLEY'S CROCODILE ADVENTURES
OPEN DAILY
8.30 am - 5.00 pm
Ph: + 61 7 4055 3576
 Fax: +61 7 4059 1017
 reservations@crocodileadventures.com
 www.crocodileadventures.com
 PO Box 171 Palm Cove Qld Australia 4879

ENTRY PRICE

SELF DRIVE Entry can be purchased on arrival.
Adults: \$39.00
Child: \$19.50 (4-15yrs)
Family \$97.50 (2 adults and 2 children)
 Prices include all wildlife shows (souvenir wildlife photos - optional extra). Current to March 2018. Student, Australian aged pensioner concessions available. Group and personal guided tour enquiries welcome. No concessions or discounts on family rate. We accept most major credit cards (Visa, Mastercard and Amex). Bookings required for large groups. Arrangements can be made for school excursions, evening functions and special interest groups. Entry subject to conditions stated at reception. Boat cruise included in admission. Sensible walking shoes strongly recommended.



CLOSED: 11th June, 2017 - Iron Man Cairns and Christmas Day.
 Hartley's Creek Crocodile Farming Company Pty Ltd ABN 69 010 618 327 T/A Hartley's Crocodile Adventures

DAY TOURS

DOWN UNDER TOURS Cairns, Trinity Beach, Kewarra Beach & Palm Cove Phone: (07) 4047 9066
 Please check with tour operator for various 17/18 maintenance closure dates. During the Skyrail closure dates a special Kuranda Scenic Rail and Kuranda village service will be packaged with Hartley's. Please ask for tour code KQH.

HARTLEY'S Half day tour - HCPM
 Ask about our koala photo upgrade.
 Scenic coastal drive to Hartley's. Free time to explore the park before the snake show, wetland cruise, Crocodile Attack Show, wallaby feeding, cassowary feeding and koala talk. Meals available (own expense). Return 4.40pm.
Adult \$96.00 Child \$52.00
Family \$275.00

KURANDA RAIL, SKYRAIL RAINFOREST CABLEWAY & HARTLEY'S - KHC
 Journey to Kuranda on the historic Scenic Railway through the spectacular Barron Gorge. Experience Skyrail Rainforest Cableway in a Diamond View (glass floor) gondola and glide just metres above World Heritage listed rainforest. Transfer to Hartley's for an afternoon activities including boat cruise, Croc Attack Show and wildlife presentations.
Adult \$208.00 Child \$109.00
Family \$560.00

BTS PORT DOUGLAS Phone: (07) 4099 5665
HARTLEY'S & PORT DOUGLAS - CPHC
 Full day tour departing 9.15 am for morning spent at Port Douglas. Transfer to Hartley's for afternoon of activities including Crocodile Attack Show, boat cruise, snake and wildlife presentations.
Cairns: Adult \$97.00 Child \$49.00 Family \$268.00

MOSSMAN GORGE & HARTLEY'S - MGH
 Full day tour departing 9.00am for Mossman Gorge (shuttle transfer included).
 Return to Port Douglas for departure to Hartley's for afternoon of activities including Crocodile Attack Show and boat cruise.
Port Douglas: Adult \$114.00 Child \$67.00
Family \$328.00

BEACHES MEET & GREET Phone: (07) 4059 2713
BIG CROC FEED™ (with transfers)
 Feed a giant estuarine crocodile as part of an exclusive guided tour with an experienced Hartley's crocodile expert, plus souvenir croc photo & signed Big Croc Feed certificate. Numbers limited: 2 - 4 pax, 16 yrs+, book min. 24 hours notice. Available 10.30am or 1.00pm daily and subject to availability.
Cairns: Adult \$165.00 Palm Cove: Adult \$152.00

BREAKFAST WITH THE KOALAS
 Start with a hot Aussie breakfast in the company of a cute koala and its keeper. (Optional koala photos available at scheduled times after breakfast). Enjoy the Hartley's wildlife presentations and activities, including a crocodile show and boat cruise.
 Departs: Cairns 8.30 am & Palm Cove 9.00 am daily. Return 1.30 pm.
Cairns & Northern Beaches: Adult \$105.00 Child \$52.50
Palm Cove: Adult \$92.00 Child \$46.00

SUNLOVER, HARTLEY'S AND TJAPUKAI - 2 day tour Phone: (07) 4050 1333
 Day 1: Catamaran departs Cairns to Outer Barrier Reef pontoon for snorkelling, glass bottom boat and semi-submersible coral reef viewing tours. Day 2: Morning at Hartley's with croc show, boat cruise and farm tour. Transfer to Tjapukai for lunch and afternoon of entertainment. Experience the world's oldest living culture. Includes lunches and transfers from Cairns CBD hotels.
Cairns: Adult \$372.00 Child \$192.00 Family \$936.00
 Northern Beach transfers an additional \$30 payable direct to Sunlover.

GTS (Global Travel Service) Phone: (07) 4041 3122
PORT DOUGLAS & HARTLEY'S Full day tour
 Departing Cairns 8.30am for morning at the coastal town of Port Douglas. Free time to explore the resort shops (lunch at own expense). Bus transfer to Hartley's for an afternoon of adventure with the Crocodile Attack Show, lagoon boat ride and wildlife presentations.
Cairns: Adult \$100.00 Child \$50.00 Family \$250.00

RAGING THUNDER Phone: (07) 4030 7990
HARTLEY'S AM & BARRON RIVER RAFTING
Half day tour - CBLHART
 Enjoy morning activities at Hartley's (lunch at own expense). Depart 1.30pm, stop at Skyrail Rainforest Cableway to change into rafting gear. Pick up for afternoon rafting on the Barron River. Return 5.30pm. Not suitable for anyone who may be pregnant.
Adult \$181.00 - plus \$30pp levy (minimum age 13 years)

BRETT'S KURANDA HALF DAY TOUR ex Port Douglas
Phone: (07) 4098 5059
HARTLEY'S, SKYRAIL RAINFOREST CABLEWAY, KURANDA SCENIC TRAIN & PALM COVE Full day tour
 Small group full day tour; pick up 8am for Hartley's morning activities including crocodile cruise, cassowary feeding, crocodile feeding show, complimentary morning tea. Transfer 11.35am for an amazing gondola experience over World Heritage listed rainforest with Skyrail Rainforest Cableway, then descend below the canopy to Freshwater on the Historic Scenic Railway. Free time to explore Palm Cove on return to Port Douglas (all food, drinks and retail therapy at own cost).
Hartley's + Skyrail & Scenic Train
Adult \$220.00 Child \$125.00 Family \$600.00
Hartley's + Skyrail OR Scenic Train
Adult \$180.00 Child \$100.00 Family \$500.00

BEACHES MEET & GREET Phone: (07) 4059 2713
HARTLEY'S & TJAPUKAI
 Morning at Tjapukai. Face painting, boomerang & spear throwing. Story of Creation, Tjapukai dance performance, hunting & didgeridoo demonstration, & more. Transfer to Hartley's for afternoon activities. Snake show, Farm tour, Crocodile Attack Show, wallaby, cassowary and koala feeding and boat cruise.
 Departs Cairns & Palm Cove: **Adult \$160.00**
Child \$80.00 Family \$400.00

CROCODILES UP CLOSE!

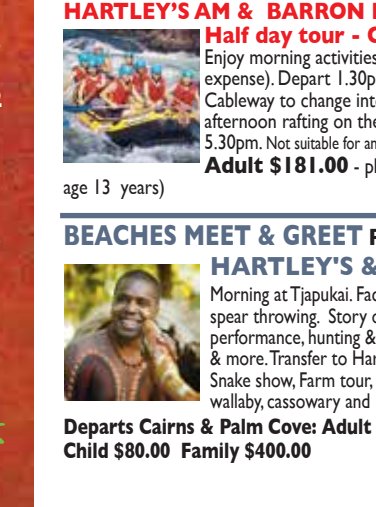
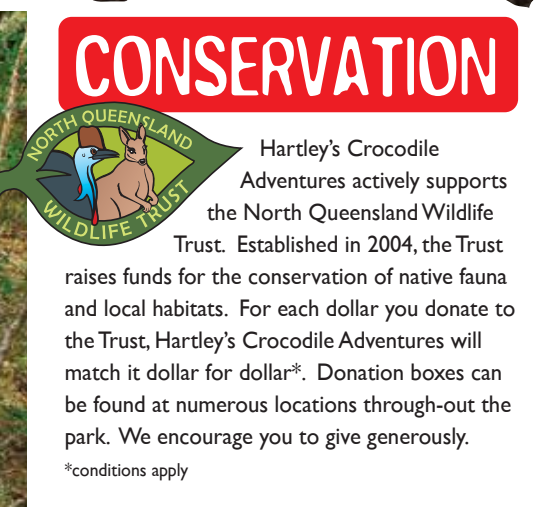


Koala encounters
Wetland boat rides
Crocodile feeding
Wildlife presentations
World Heritage location
Licensed Restaurant



ADVENTURES

The Best Crocodile Show in Australia™



Printed for overseas distribution



Get Wild!

We're all about wildlife. Here at Hartley's Crocodile Adventures, we'll give you the best croc show in the best environment in tropical north Queensland.

Since 1980, our family has pioneered wildlife experiences in the Cairns area. We strike a balance between entertainment and content with our conservation oriented presentations which are both educational and enjoyable.

Take a boat cruise on Hartley's Lagoon where crocodile sightings are guaranteed! Watch a huge crocodile lunge from the water during pole feeding, and see a live demonstration of the crocodile death roll and head shake. We have saltwater crocodiles, freshwater crocodiles and plenty of other local native wildlife. Watch a snake show, meet the bird life in our walk-in aviary and discover the magnificent cassowaries which are so important to our tropical rainforests.

In our range of daily activities you'll be fascinated by our live and up-close presentations. Our professional wildlife keepers will help foster an



understanding and appreciation of wildlife in a way which is both fun and friendly.

Our award winning ecotourism accredited attraction has been carefully created on 10 hectares in a World Heritage location. After many years of habitat restoration it is now a true sanctuary. Over 2100 metres of boardwalks and pathways allow you to discover this innovative wildlife park.

Above all else, Hartley's Crocodile Adventures is a great day out!! After exploring, relax at Lilies, our licensed restaurant where you can enjoy a coffee or dine on delicious food while overlooking Hartley's Lagoon.

Step back in time to the origins of Australia's wildlife in the Gondwana Gateway. Have you ever wondered why Australia's animals are so different to those in the rest of the world? The answer lies in our continent's lengthy isolation from other land masses and the adaptations our fauna needed to make to survive a changing climate and habitat. Take a journey through the evolution of some of Australia's most intriguing animals. The self guided walk is set in a natural bush-land setting and is home to a variety of free ranging animals.

EXPLORE

Hartley's Lagoon – our No. 1 croc spotting spot! Tour the wetlands on a boat cruise and watch crocodiles, birds and the wildlife of the coastal melaleuca habitat.

Wildlife Discovery Trail – meet freshwater croc, water birds and lizards and go through our tropical walk-through bird aviary.

Cassowary Walk – introduce yourself to our beautiful flightless emblems, the Cassowaries, and discover why they are so important to our rainforests. Meet owls and kookaburras in our walk-through predatory bird aviary.

Our natural immersion exhibits are designed to enhance your viewing experience. This expansive property has undergone extensive restoration and is now a thriving habitat for an array of native wildlife.

Crocodile Farm – we operate a crocodile farm here. Learn how it works and gain an insight into how crocodile farming contributes to conservation by taking our farm tour.

Gondwana Gateway is best described as the 'bridge between two worlds'. The interpretative signage explains how isolation and adaption shaped our unique fauna over time.

Private Guided Tours – Ask about our range of interactive VIP tours available to self-drive and pre-booked groups. Extra charges apply – bookings essential.



ACTIVITIES



- 9.00am** **BOAT CRUISE**
Take a cruise on Hartley's Lagoon spotting crocodiles and other wildlife in this superb tropical wetland. Cruise times approx. 25 minutes.
- 9.30am** **CASSOWARY FEEDING**
Learn about these magnificent endangered rainforest birds and help our keeper to feed them.
- 10.00am** **CROCODILE FARM TOUR**
Gain an insight into the operation of our crocodile farm. Learn how farming contributes to the conservation of wild crocodiles and their habitat.
- 10.00am-4.30pm** **CROCODILE & PYTHON PHOTOS**
Impress your friends with a photo of you holding a LIVE crocodile or friendly python! Your chance to take home an amazing memory (extra charge).
- 10.30am** **BOAT CRUISE**
Take a cruise on Hartley's Lagoon spotting crocodiles and other wildlife in this superb tropical wetland. Cruise times approx. 25 minutes.
- 11.00am** **CROCODILE FEEDING**
See a huge estuarine (saltwater) crocodile hand fed in a presentation which also features Australia's indigenous Freshwater crocodile.
- 1.00pm** **BOAT CRUISE**
Take a cruise on Hartley's Lagoon spotting crocodiles and other wildlife in this superb tropical wetland. Cruise times approx. 25 minutes.
- 1.30pm** **CROCODILE FARM TOUR**
Gain an insight into the operation of our crocodile farm. Learn how farming contributes to the conservation of wild crocodiles and their habitat.
- 2.00pm** **SNAKE SHOW**
Discover the world's most venomous snakes and learn how to administer first aid for snake bite.
- 2.30pm** **BOAT CRUISE**
Take a cruise on Hartley's Lagoon spotting crocodiles and other wildlife in this superb tropical wetland. Cruise times approx. 25 minutes.
- 3.00pm** **CROCODILE ATTACK SHOW**
"The Best Crocodile Show in Australia™" Watch our professional, experienced keepers demonstrate the notorious death roll and head shake.
- 3.45pm** **WALLABY & QUOLL FEEDING**
A delightful opportunity to help our keepers with the afternoon wallaby and kangaroo feed. Learn about one of Australia's unique marsupial carnivores, the spotted tailed quoll when our keepers feed them with their favourite treats.
- 4.00pm** **BOAT CRUISE**
Take a cruise on Hartley's Lagoon spotting crocodiles and other wildlife in this superb tropical wetland. Cruise times approx. 25 minutes.
- 4.15pm** **CASSOWARY FEEDING**
Learn about these magnificent endangered rainforest birds and watch them devour tropical fruit - whole!
- 4.30pm** **KOALA FEEDING**
Koalas sleep most of the day. Feed time is your chance to watch them come alive when presented with fresh gum leaves.

BOAT CRUISES

- Paid admission to Hartley's includes a boat cruise, subject to the conditions provided at reception.
- Visitors are issued with their boat pass and allocation time upon arrival.
- Additional cruise passes may be provided at the discretion of reception staff and are strictly subject to availability.
- CONDITIONS:**
- Children must be accompanied by a responsible adult.
- Mobile phones must be switched off for the duration of the ride.
- Passengers must remain seated for the duration of the ride.
- No food or drink may be consumed on the boat (except bottled water).
- Smoking is prohibited on the boats.

WHAT TO BRING

- Sensible walking shoes, a wide brimmed hat and sunscreen.
- When it is hot or very humid, you may need to drink up to three litres of water per day. Chilled water, soft drinks and snacks are available from Lilies Restaurant.
- On rainy days an umbrella or rain coat is useful.
- Your camera or video recorder. Batteries and video tapes are available from the Paperbark Gift Shop.
- Bird Watchers may wish to bring their binoculars.
- A wheelchair is available for visitors at no charge. Check with us prior to departure from your accommodation to ensure it is available.
- A limited number of strollers are available for hire.

